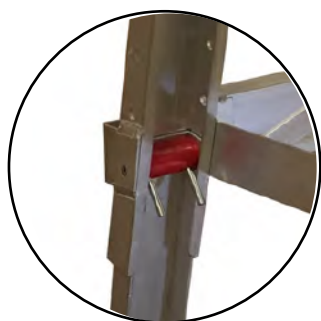


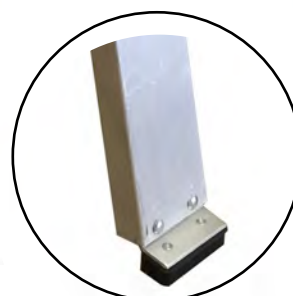
**Features and Benefits**

- Constructed of Rugged T6 Aluminum
- No Assembly Necessary
- Locking Support legs
- 6 Different Height Options
- Fold and Carry Design
- Rubber Non-Slip Feet
- 450lb Weight Capacity
- 48" x 9-1/2" Work Area

**450lbs Capacity**



Locking height adjuster



Non-slip foot design

Item No.	Specifications
ADB48912	48" x 9-1/2" Drywall Bench(T6 Alu)